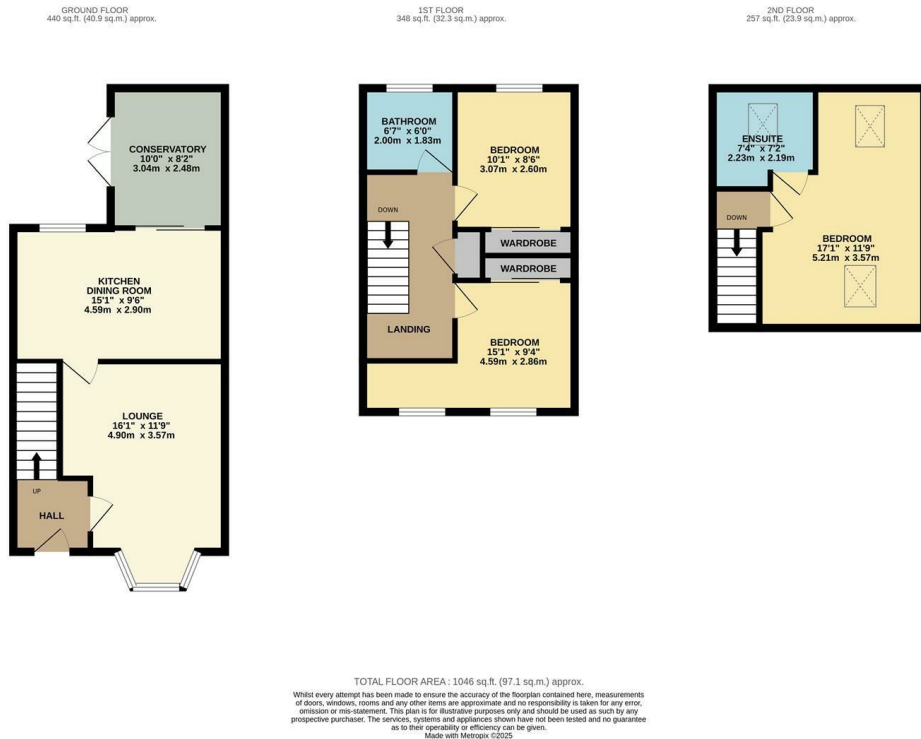


1 Robinia Close, Leamington Spa
£1,600 Per Month

charlesrose.



We are delighted to present this well-maintained furnished three bedroom family home, set in a popular residential area of Leamington. Positioned back from the road, the property benefits from a large driveway offering ample off-road parking and useful side access to the rear garden.

The ground floor features a spacious family living room with plenty of space for seating. To the rear, a modern kitchen/diner comes complete with integrated appliances including a fridge freezer, washing machine, dishwasher, electric oven and gas hob. Just off the kitchen is a bright conservatory providing an additional living area with direct access to the garden.

On the first floor, there are two well-proportioned double bedrooms, both featuring fitted wardrobes and with the second bedroom enjoying views over the rear garden. The family bathroom includes a three-piece suite with bath and shower over, pedestal basin, and W.C. The top floor hosts a generous third double bedroom with velux windows and its own en suite comprising a shower cubicle, vanity basin, and W.C.

The standout feature of this property is the beautifully landscaped rear garden, which includes a stylish covered seating area with lounge furniture and a BBQ space – perfect for summer entertaining or relaxing outdoors.

Sorry No Sharers & No Pets

charlesrose.

- 01926 832411
- hello@charlesrose.co.uk
- charlesrose.co.uk

